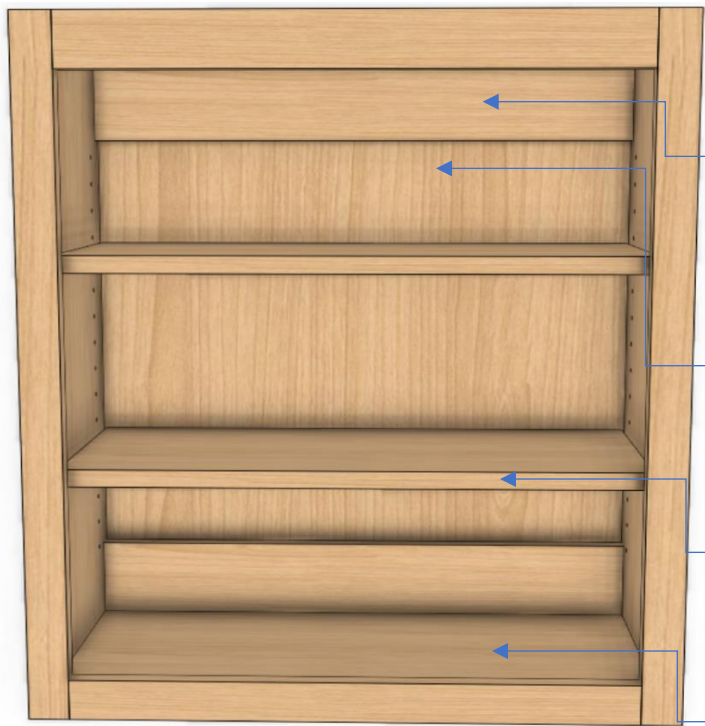




2 3/8" Top Rail with full overlay leaves 1 3/8" above the doors to attach crown molding

Full Overlay 1/4" reveal on bottom and sides of doors

2 1/8" Stiles and Rails on Doors

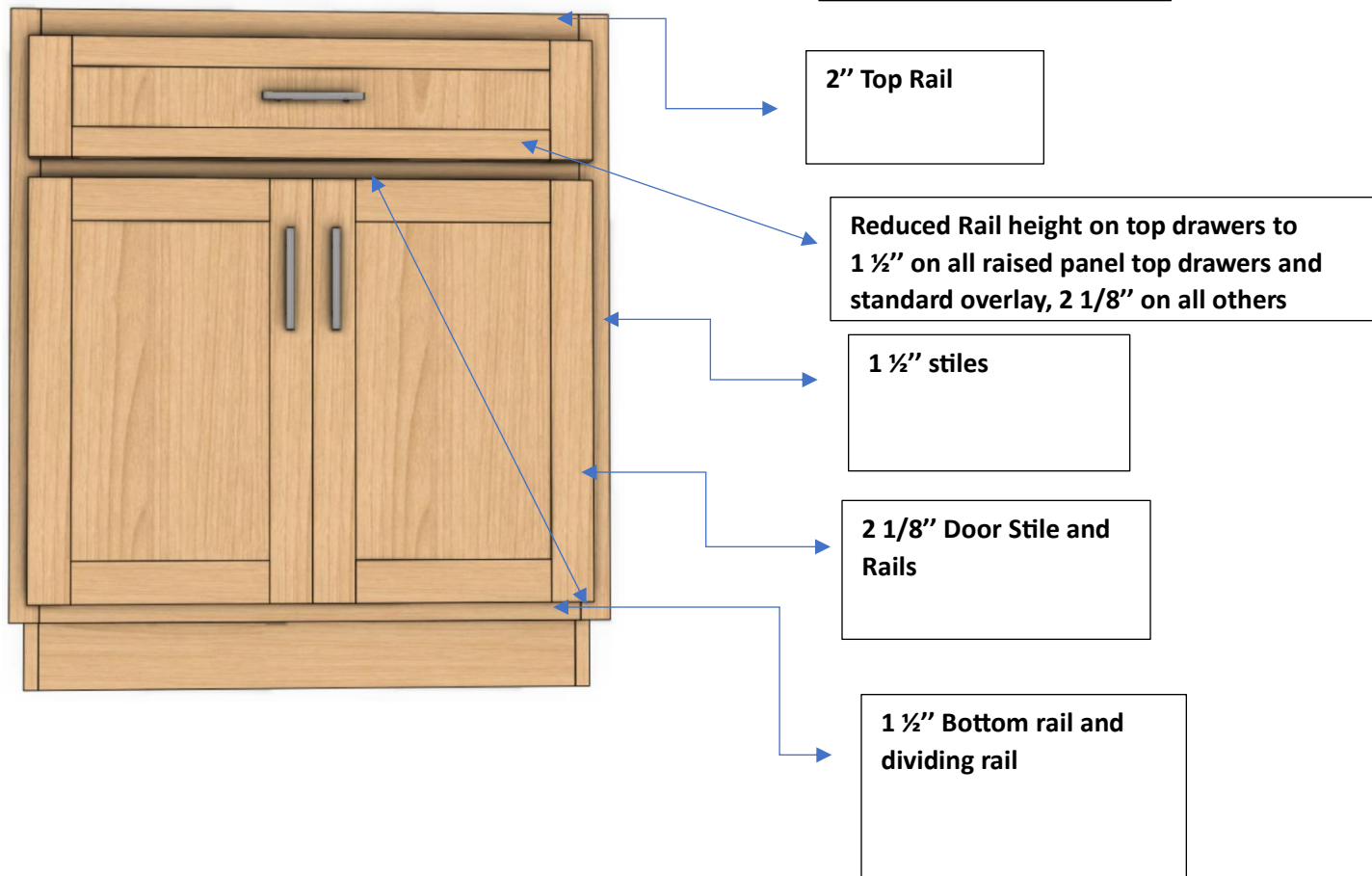
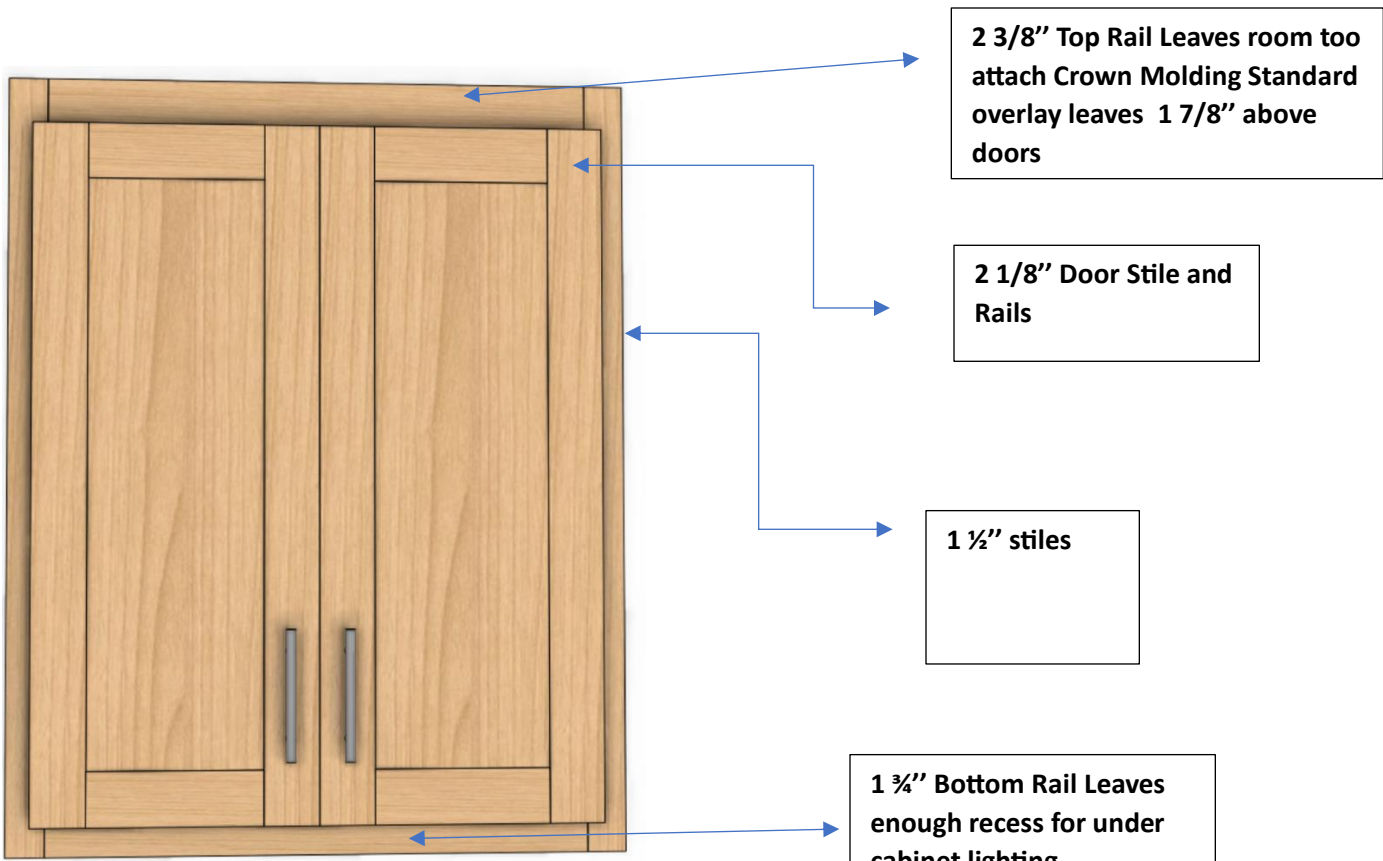


3/4" x 1 1/2" screwed

1/4" plywood backing

3/4" Adjustable shelf

The Case is constructed of 3/4" veneer core plywood





Designed and hand crafted in Maine, start to finish! Quality is paramount, that's why we have a three step quality control process. We hand deliver direct to the customer. Traditionally shorter lead times than industry average. We think outside the box to make our customers dreams come true, you think it, we build it!

- We offer 10 species to choose from: Maple, Cherry, White Oak, Red Oak, Walnut, Hickory, Knotty Alder, Poplar, Red Birch, and Quarter Sawn White Oak
- Choose from any of Sherwin Williams colors, plus the ability to custom match*
- We build standard overlay, full overlay, and inset doors with multiple panel profiles available
- We use solid face frame construction from locally sourced, hand selected lumber
- ¾" plywood construction is standard, no upcharge
- Finished ends are standard, no need to specify and no additional charge
- 5/8" Dovetailed drawers with industry leading ½" plywood bottoms
- Adjustable pullouts made with same species as the cabinets, upon request
- American made BLUM hardware - Soft close undermount slides 100lb rating
- Large Top rail, 2 3/8" on uppers to attach crown molding, eliminating the need and added expense of starter molding, and saves on installation time
- Large Bottom rail, 1 ¾" to hide recessed lights, no need for a light rail unless you want the added detail
- 8' Standard moulding, unless otherwise specified, depending upon availability
- Custom cutouts available for appliances, to save on installation time
- Clear coat maple shelves for added durability, paint to match when behind glass doors
- Catalyzed Lacquer finishes, best product in the industry
- Installation Available

FRAMELESS CABINETRY ALSO AVAILABLE!!!

*Additional charge